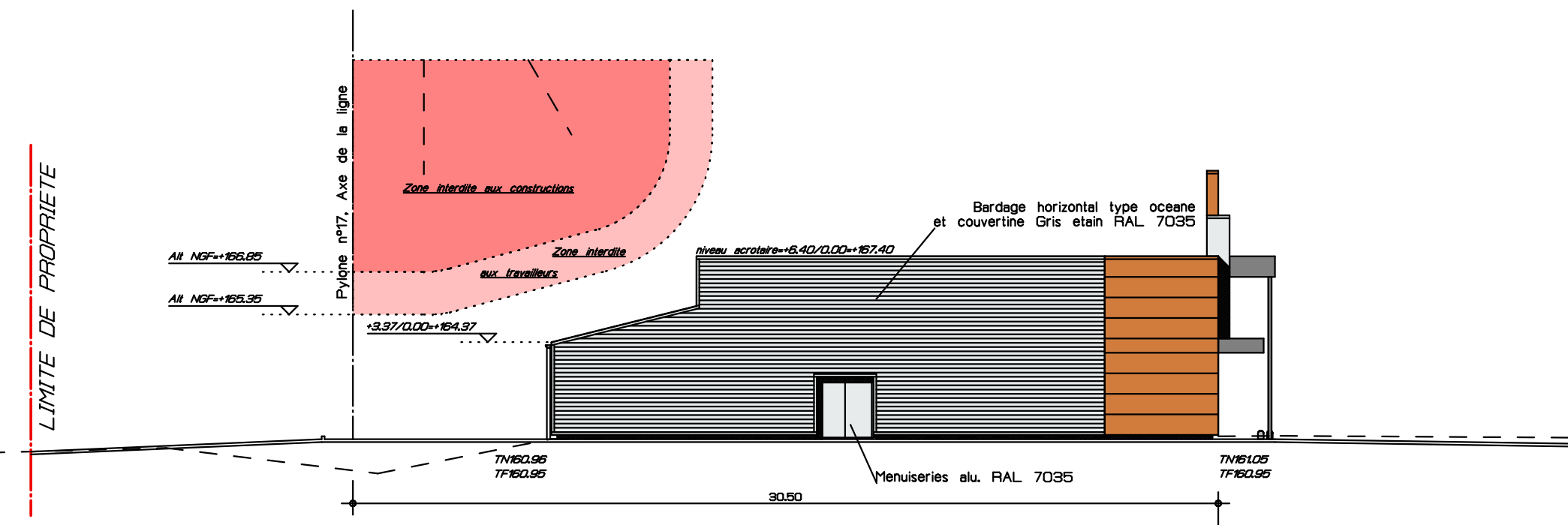
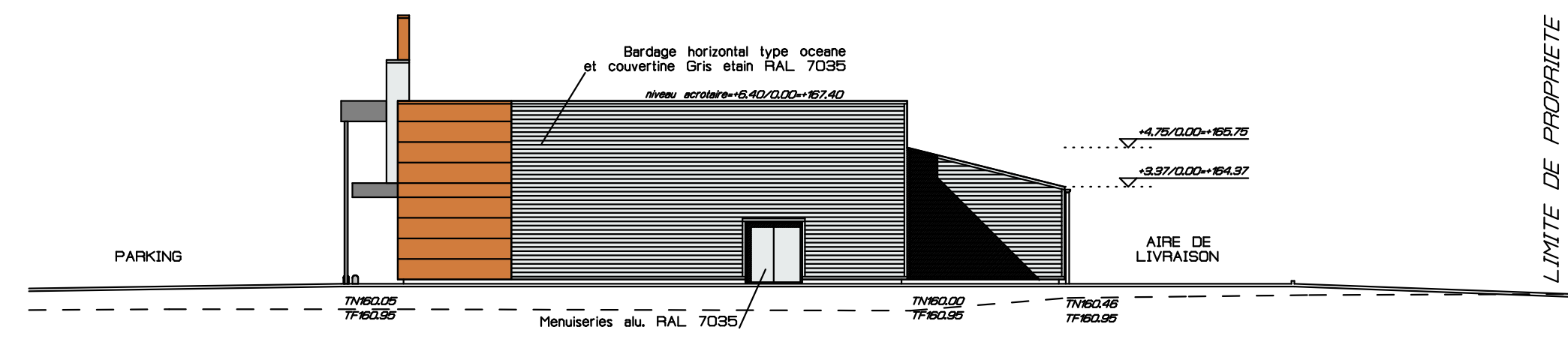


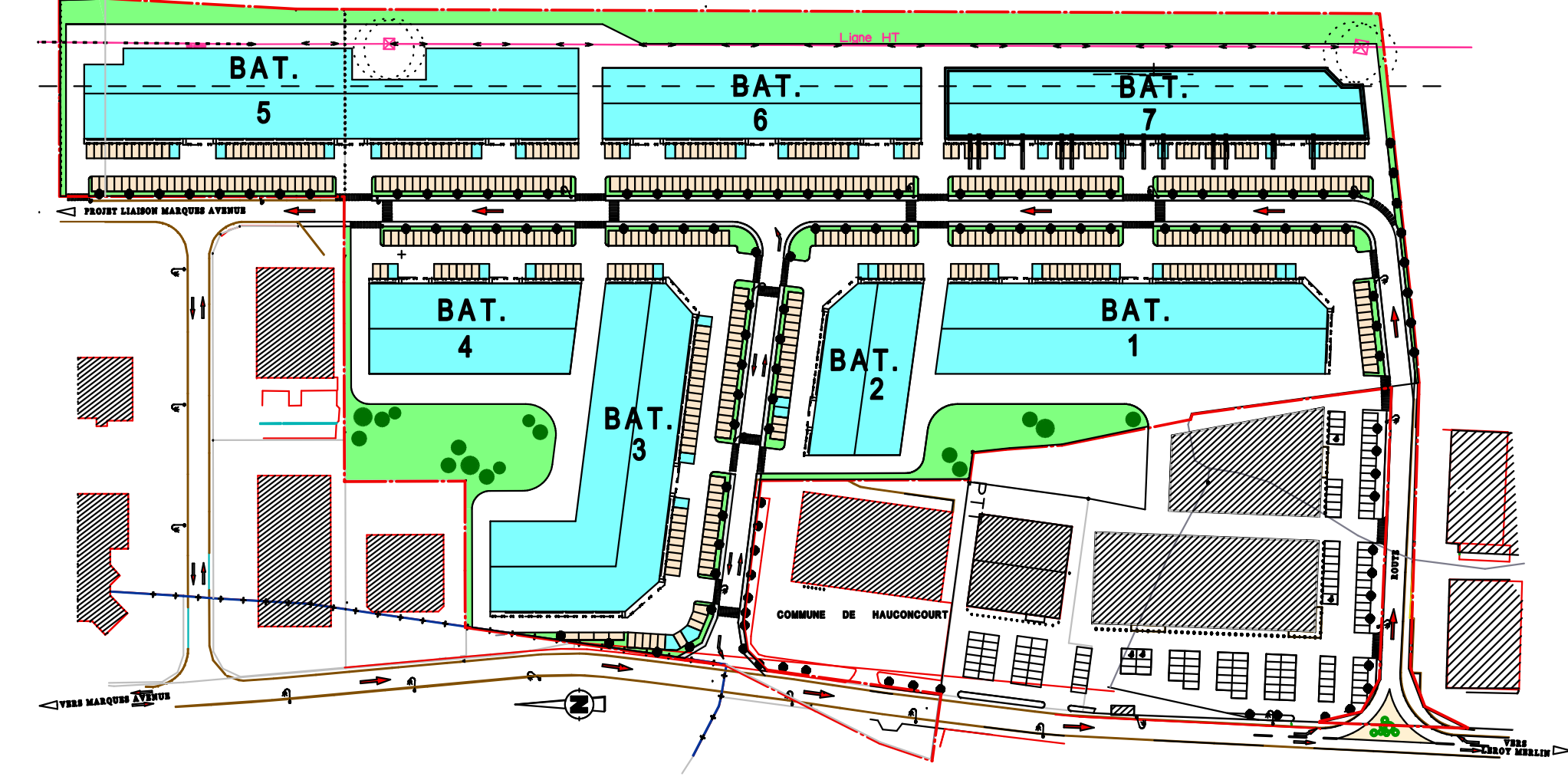
FACADE EST



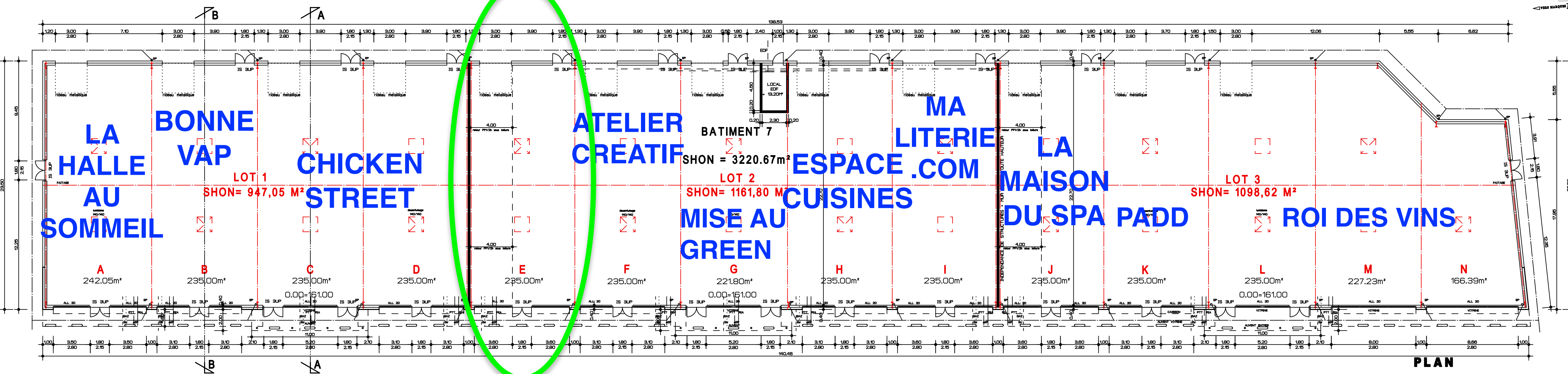
FACADE NORD



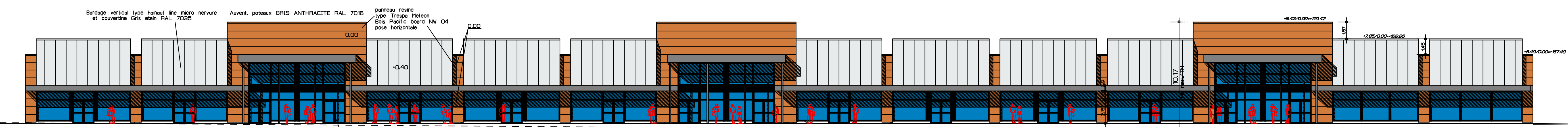
FACADE SUD



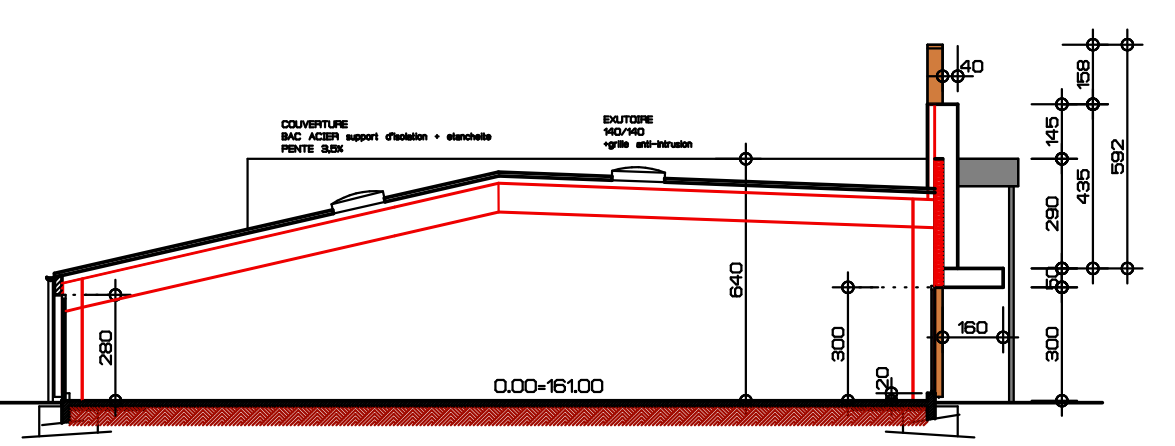
PLAN DE MASSE



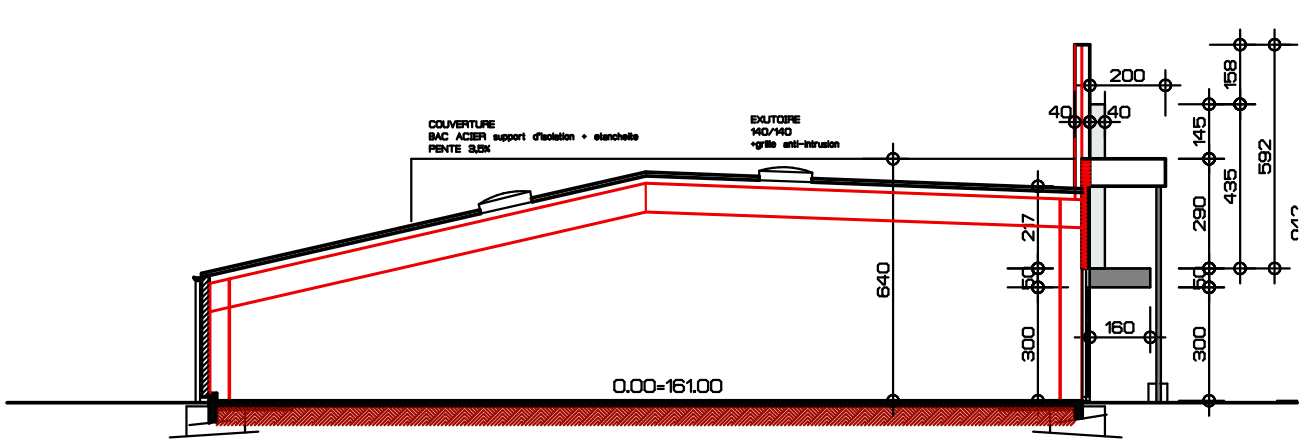
PLAN



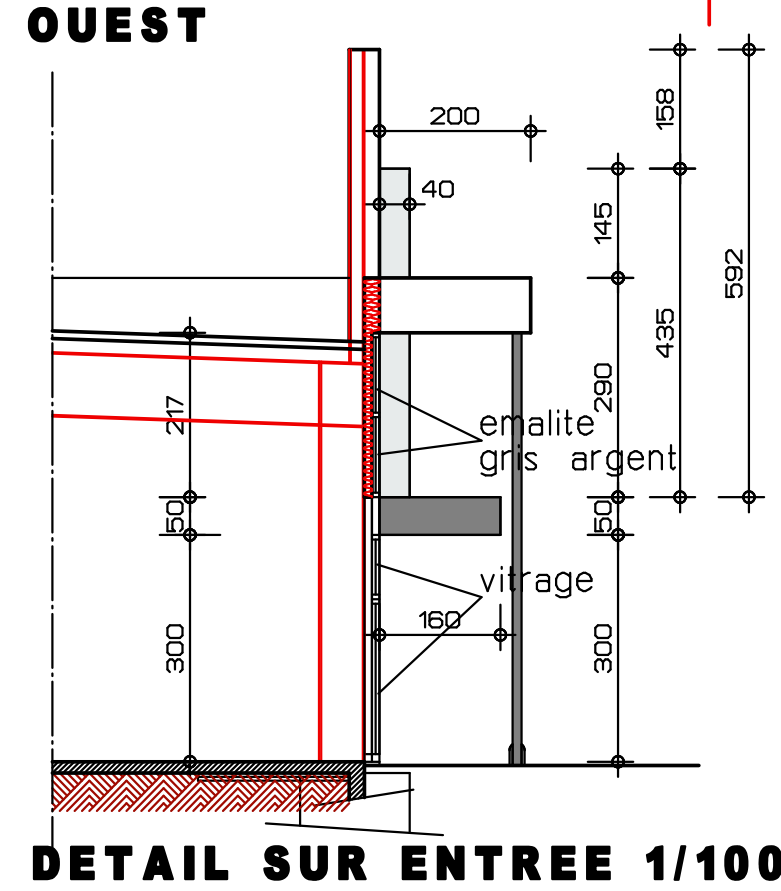
FACADE OUEST



COUPE TYPE



COUPE TYPE SUR ENTREE



DETAIL SUR ENTREE 1/100'

NOTA: TOUS LES INTERVENANTS SONT TENUS DE VERIFIER LES COTES SUR PLACE.

DEPARTEMENT DE LA MOSELLE
commune de HAUCONCOURT

Syndicat Talange-Hauconcourt

PARC SAULES

D.Q.E.

pour le compte de
GNC HOLDING

14

BATIMENT 7		JULIET 2008
TABLEAU DE SURFACE		24 SEPTEMBRE 2008
PLAN DE MASSE		modif Independances Structures
PLAN	1/200'	29 SEPTEMBRE 2008
COUPE	1/200'	modif= 2 Independances Structures
FACADES	1/200'	

MAITRE D'OUVRAGE

GNC HOLDING
ESPACE IMMOBILIER
ACTISUD DUNEL
57190 VILLY-AUX-ARCHES
Port : 06.07.48.45.56
Fax : 03.87.38.39.61

MAITRE D'OEUVRE

ATELIER D'ARCHITECTURE
MARCEL SEMECAS
25, avenue de Nancy 57000 METZ
Tel : 03.87.63.14.27
Fax : 03.87.56.06.00
E-mail: atelier-semecas@wanadoo.fr